



At A Glance

Project:

Construction and Commissioning of Marine Works for Storm Water Outfall (SWO) and Effluent Treatment Plant (ETP) Outlet Pipeline for RAPID

Owner:

PRPC Utilities and Facilities Sdn Bhd

Client:

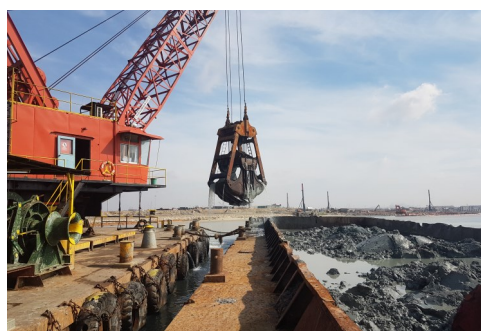
See Yong & Son Construction-Menta JV

Contract Sum:

RM 19,005,000.00

Contract Period:

15.09.2016—16.05.2017



P098 : Capital Dredging for SWO RAPID at Tg. Setapa

Dredging Works

The RAPID project will include, among other things, a Storm Water Outfall (SWO) structure as part of the artificial drainage system needed for the project and some coastal protection at Tg. Setapa in Pengerang. Therefore, it requires an Effluent Treatment Plant (ETP) to treat contaminated water from the process facilities to a standard suitable for discharge into the sea. The offshore ETP outlet line location is at the east of the SWO.

Design Parameters:

Design Depth	: -3.5mCD, -2.5mCD
Disposal Location Distance	: 21 nautical miles
Dredge Quantity	: 855,000 m ³ (Provisional)

Vessel Deployed:

No.	Equipment	Capacity	Quantity
1	Grab Dredger	13m ³ & 16m ³	2
2	Non-propelled Split Hopper Barge	1,000m ³ & 1,280m ³	6
3	Self-propelled Split Hopper Barge	1,000m ³	1
4	Tug Boat	1,000bhp & 1,200 bhp	6
5	Anchor Handling Tug	5T	1

